

UNIT - 308

22' AMBROSIA GRANDE INT

Move In Ready in 120 Days

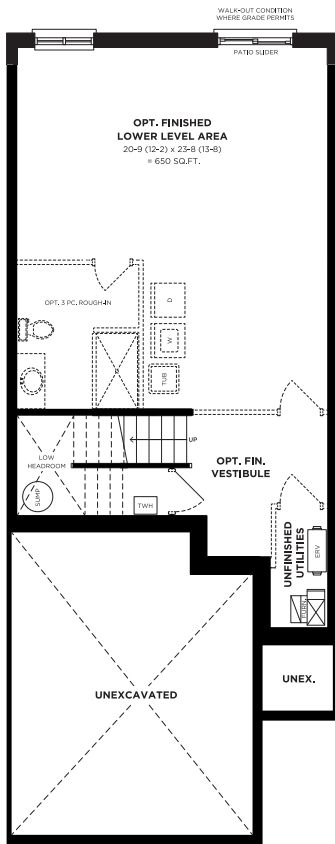
3 — 2.5 — 1,879 SQ.FT.



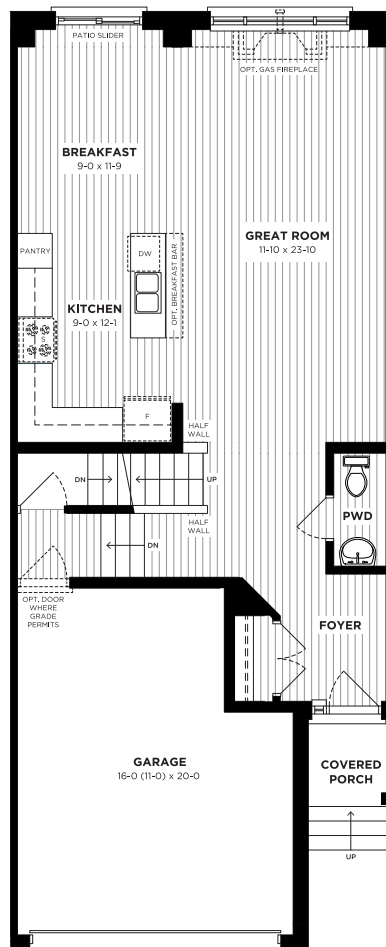
DESIGNER UPGRADES CHOOSE YOUR FINISHES

- Lower Level walk-out
- Lower Level Three-piece Rough-in
- Interior pot-lights in Kitchen and Great Room with dimmer switch
- Piano hinged upper corner cabinet in Kitchen
- Quartz in the Kitchen with undermount sink
- Extended height uppers
- Pantry in the Kitchen
- Ensuite tiled shower with sliding glass door and acrylic base

LOWER LEVEL



MAIN FLOOR INCLUDES 9' CEILINGS



SECOND FLOOR

